



VERSA
INTEGRITY GROUP

Nondestructive Examination Services

PORTABLE LASER CORROSION MAPPING



What is Laser Corrosion Mapping?

Laser Corrosion Mapping takes the manual pit-gauge exercise of measuring depressions or features on a surface and turns it into a user-independent, repeatable presentation that is very similar to an AUT C-Scan type presentation of data. This allows the end user to take the data and create maps of corrosion areas, do trend analysis of the corrosion, etc. just like one would do with AUT data.

Common Laser Mapping Equipment Uses

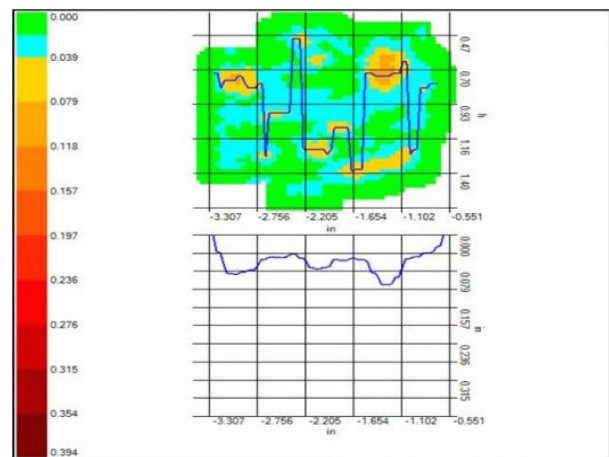
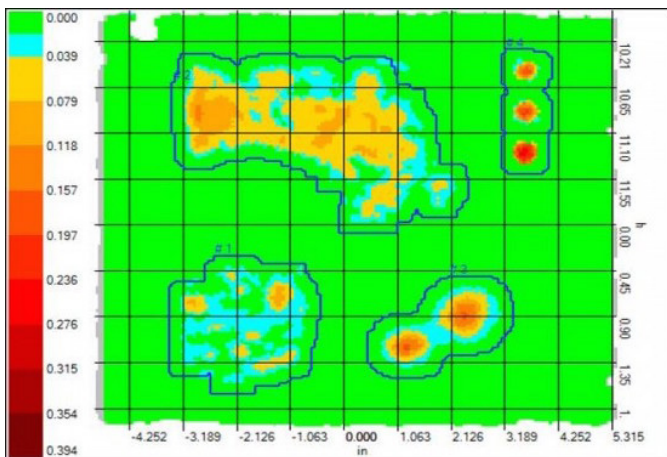
- Corrosion and damage monitoring
- Component replication (reverse engineering)
- Space monitoring
- Creation of virtual copies of piping spools and components for exact fabrication on-shore
- Design of “exact fit” parts such as covers, screens, clamps, etc.

Why Portable Laser Corrosion Mapping?

One of the issues we have faced in the past is areas of components that cannot be scanned by Automated Ultrasonic Testing (AUT). Examples of these are:

- Areas that external corrosion is too great or difficult for the ultrasonic transducers
- Internal components such as trays, mounts, supports, etc. that are inaccessible to AUT
- Insulated components where the insulation cannot be removed from the exterior for AUT scanning

Example Corrosion Map and Detail of Corrosion Feature



THE UNIFIED SOLUTION.

Versa Integrity Group is expanding operations to cover the areas that are close to our clients. If you need solutions to your complex NDE, inspection, and reliability challenges, we have an office that can quickly and conveniently meet your needs.